

amazon fabric

The Amazon fabric is designed for areas where privacy or solar shading is needed. This fabric is 100% polyester and boasts a flame retardant composition to ensure that this fabric is suitable for many applications both commercial and domestic. The dim-out properties of this fabric allow a certain amount of light to penetrate whilst at the same time taking away the glare. Amazon fabric is available in 14 colours and in three widths – 2000mm, 127mm and 89mm. This comprehensive range has the capacity to challenge many larger collections.

- Fabric Composition:

Fabric Range:

Louvre Widths:

Roller Fabric Width:

Fabric Thickness:

Fabric Weight:

Fire Retardancy:

Shading:

Moisture Resistance:

Care Instructions:
- 100% Polyester

14

127mm (5")
89mm (3.5")

2000mm (78.7")

0.50mm - nominal

240 g/m² - (+/-10)

Conforms to BS5867,
Part 2: Type B 2008

Dim-out.
Recommended
for computer
environments

Suitable for moist
conditions

Wipe with damp
sponge; Do not
tumble dry; Do not dry
clean; Do not iron

CI/SfB 1976 reference by SfB Agency			
	(76.7)	X	

White



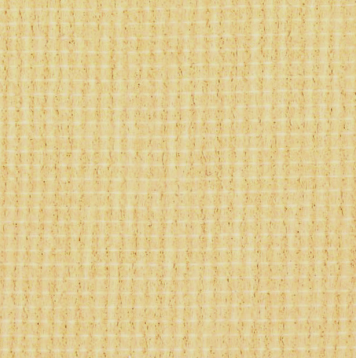
Black



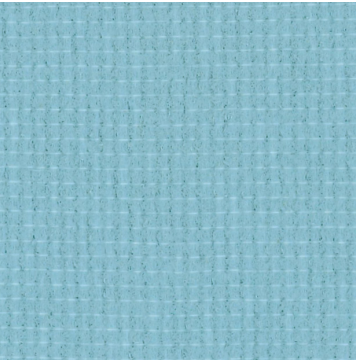
Cream



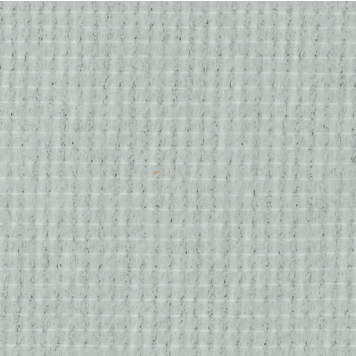
Buttermilk



Light Blue



Grey



Magnolia



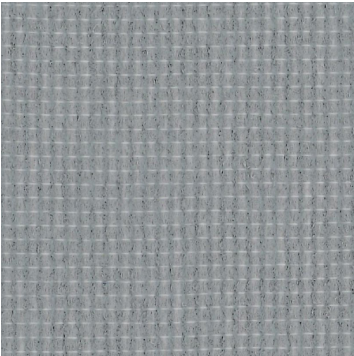
Beige



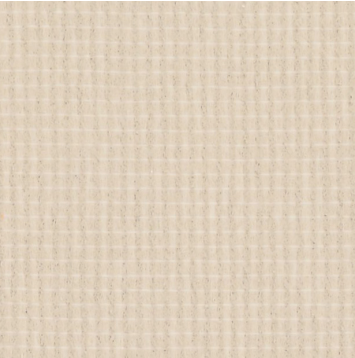
Blue



Mid Grey



Limestone



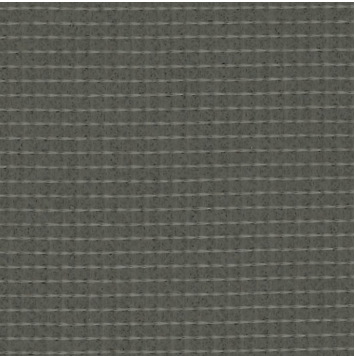
Crimson



Midnight Blue



Dark Grey



amazon

Amazon

Dimout fabric



- Roller and louvre dimout fabric collection for public and corporate use.
- 14 bold dimout fabric colours
 - Perfect for offices environments
 - Wipe clean
 - Fire retardant

MAPLE

amazon fabric

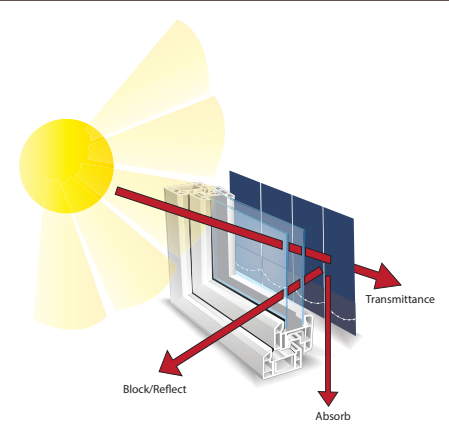
shading efficiency

Transmittance is the amount of light and heat transmitted beyond the fabric. The lower the amount, the greater the efficiency.

Block/reflect is the amount of heat and light that is blocked or reflected. The higher the amount, the greater the efficiency.

Absorption is the amount of heat and light absorbed in the fabric. The higher the amount, the lower the efficiency.

Ultraviolet protection illustrates how protective the fabric is against ultraviolet rays. The higher the amount, the greater the effectiveness.



	2000 mm	127 mm	89 mm	Heat Transmittance %	Light Transmittance %	Heat Reflection %	Light Reflection %	Ultraviolet Protection %	Shading Co-efficient %
White				18	16	74	84	100	0.25
Cream				18	19	70	81	100	0.29
Magnolia				19	19	71	80	100	0.28
Buttermilk				15	13	65	70	100	0.33
Limestone				13	10	79	89	100	0.20
Beige				8	6	50	53	100	0.45
Crimson				3	0	22	13	100	0.68
Light Blue				8	3	45	39	100	0.49
Blue				5	0	26	10	100	0.65
Midnight				5	0	26	9	100	0.65
Grey				11	8	51	55	100	0.44
Mid Grey				12	3	53	39	100	0.43
Dark Grey				1	0	15	16	100	0.74
Black				0	0	5	6	100	0.83